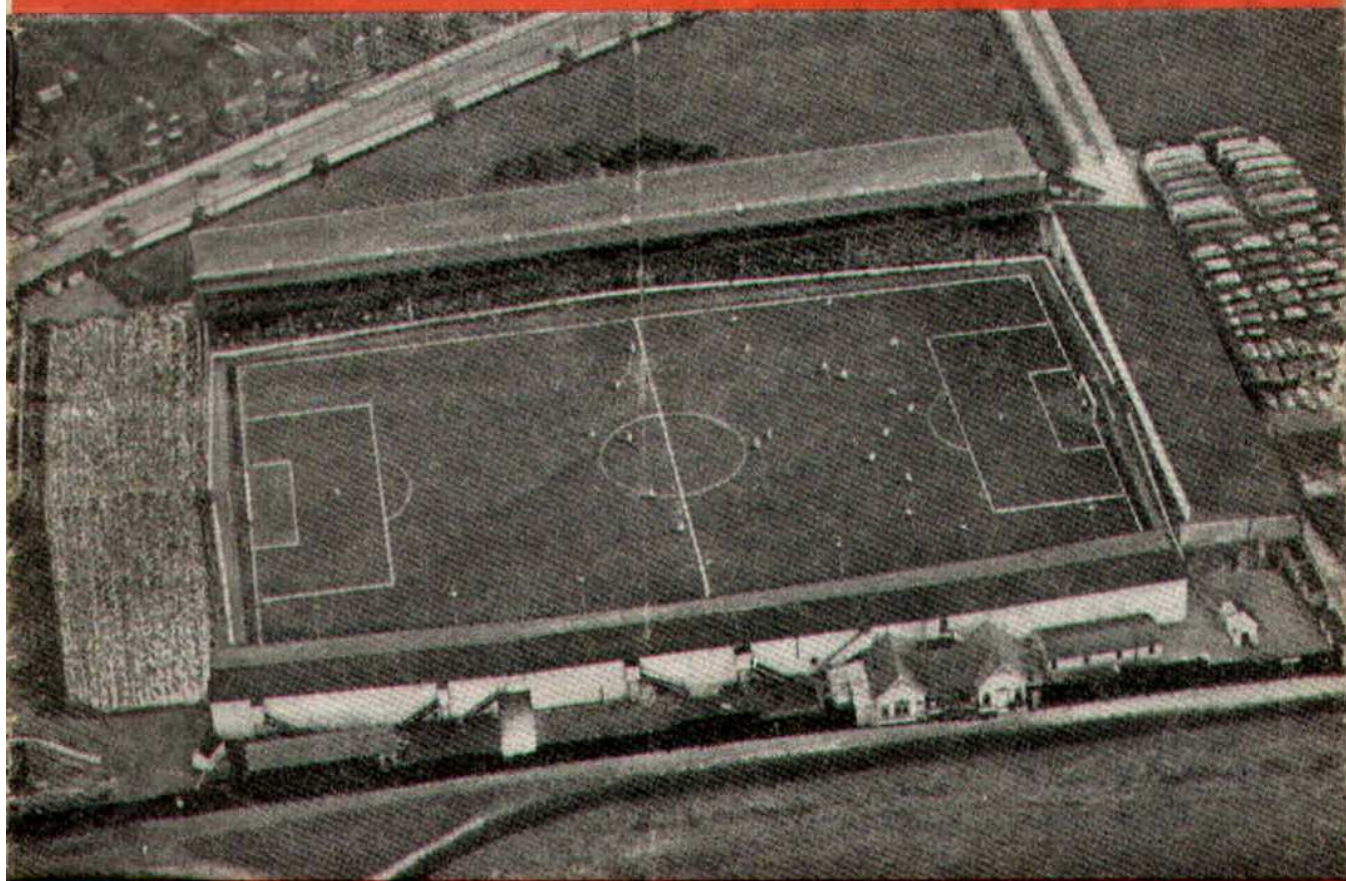




SWINDON TOWN FOOTBALL CLUB



MONDAY, APRIL 16th, 1962

DIVISION III

SWINDON TN. *v.* HALIFAX TN.

Kick-off 7.30 p.m.

Official Programme

4d.

**SOUTHERN LAUNDRY
CO. LTD.**

Launderers and Dry Cleaners

TELEPHONE 4161

STATION RD., SWINDON

GO MODERN — GO ELECTRIC
for

TELEVISION, RADIO AND
DOMESTIC APPLIANCES

D. ROBSON

22 HAVELOCK STREET

6602

Swindon

6602

Make your Goal the

EAGLE HOTEL

(Prop.: Tom Hamilton)

WORTHINGTON :: GUINNESS

DEVENISH BEERS :: BASS

REGENT ST., SWINDON

LITTLE & CO. LTD.

The Name Linked with Service
and Value

*The Popular Ladies' and Men's
Complete Outfitters*

31-32 FLEET ST., SWINDON

Telephone 22831

NEXT MATCH . . .

DIVISION III

SWINDON TN. v. TORQUAY U.

FRIDAY NEXT, APRIL 20th, 1962

Kick-off 3 p.m.

Dr. BARNADO'S HOMES

Take care of 7,500 needy children and
still depend on public support

Send your donation to—

**Barnardo House, Stepney
Causeway, London, E.1.**

Donated by: Mrs. S. Mutch, 60
Cricklade Road, Swindon

LEESE, ING & Co. Ltd.

Incorporating BARKER & CO.

*Mineral Water and
Squash Manufacturers*

LANSDOWN RD., SWINDON

Telephone 22744/22320

HULFORD MOTORS Ltd.

SELF DRIVE HIRE

Fleet of 1962 Fords
Populars - Anglias - Consuls

SHRIVENHAM ROAD

(200 yards from Football Ground)

Phone 4934

LARGE CAR PARK AVAILABLE

For Quality
FLOWERS, FRUIT & VEGETABLES
Also FROZEN FOODS

**CLARKE'S
of Old Swindon**

Proprietors: A. G. G. & J. A. W. HUNT

64 DEVIZES ROAD - SWINDON

'Phone: 22337

ORDERS DELIVERED

SWINDON TOWN FOOTBALL COMPANY LIMITED

Registered Office: COUNTY GROUND, SWINDON

Directors:

Mr. W. J. CASTLE (Chairman)

Mr. H. E. LANE (Vice-Chairman)

Mr. B. T. HAMILTON (Hon. Treasurer)

Messrs. C. CHANDLER, J.P., J. DAVIES,

R. FRICKER, C. J. GREEN, F. PLYER, H. WILLIAMS and K. H. WILMER

Manager: B. J. HEAD.

Secretary: R. A. MORSE

VOL. 12

MONDAY, APRIL 16th, 1962

No. 25

Club Notes

These notes are being written before the results of the two games at Nottingham and Port Vale are known. The players are certainly taking part in many matches.

Notts County (away)—Thursday, 12th April.

Port Vale (away)—Saturday, 14th April.

Halifax (home) — Monday, 16th April.

Quite a comprehensive programme. Fortunately we are in a fairly safe position, otherwise defeats could have had a disastrous effect upon the club.

Prior to these three games, the First Team played against an All Stars Eleven on Monday, 9th April. The game was witnessed by a large crowd, and we are quite sure every-

one present thoroughly enjoyed the evening. It was a delight to see such entertaining football. While maybe a little of the "bite" was missing, no real tackles all the evening, the actual use of the ball, and the excellent ground passing was a joy to behold. No big boot, no wild last ditch clearances. Simply purposeful football, splendid positional play, grand shooting and some superb goalkeeping. Leslie of West Ham certainly put on a show for the spectators in the second half and how he enjoyed every minute of it. What a great player still is Tom Finney, as speedy as ever, and a perfect gentleman on and off the field. Praise too for that "Prince" of real sportsmen, Billy Wright. It was indeed a fine gesture on his part to

THE WALCOT CHEMIST

WIDE RANGE OF COSMETICS, PERFUMES,
BABY NEEDS AND PHOTOGRAPHIC GOODS

10 SUSSEX SQUARE - WALCOT
TEL. 6680

M. J. REYNOLDS

Grocer

152/154 CRICKLADE ROAD
5479 SWINDON 5479
COOKED HAM OUR SPECIALITY

WATSON'S CENTRAL NEWSAGENCY LTD.

Swindon's Leading Wholesaler

1 WELLINGTON STREET, SWINDON
Tel. 22049

L. WOLLEN

OFF LICENCE

WINES & SPIRITS

Arkell's Ales and Stout

373 Cricklade Rd., Swindon
Deliveries Daily Phone 3508

CLUB NOTES—continued

play in this game, as he is indeed a very busy man. Friends with everyone, and a quiet unassuming personality, he also acted as chauffeur to the three West Ham players.

Maybe some spectators were disappointed over the non-appearance of Stanley Matthews, but they must have been thrilled with the display of his substitute Paine of Southamp-

ton, and one on the very threshold of the England team. What a great goal, number five for his side.

It was good to see two of our previous players return to help in the benefit for Maurice — namely John Neal and "Bronco" Layne.

All in all, a great evening for everyone, and we hope a "bumper" benefit for our captain Maurice Owen.

FOR ALL YOUR ANGLING NEEDS
CONSULT

FRANK WOODWARD

Swindon's Fishing Tackle Specialist

25 HAVELOCK ST., SWINDON
PHONE 3879

WE ARE SPECIALISTS IN —
OUTSIDE CATERING AND LICENSED BARS
FOR WEDDINGS, FETES, SPORTS DAYS, etc.

THE MASONS ARMS HOTEL

31 HIGH STREET - SWINDON 3522

H. E. LANE

(REGENT STREET) LTD.

The Pork Sausage Specialists

117 Victoria Road, Swindon
Telephone: 22336

COMLEY'S

Modern Music Centre

26 HAVELOCK ST., SWINDON

RECORDS - MUSIC - INSTRUMENTS

Top Twenty "Pops" always in stock
and wide selection of Jazz and Classics

PERSONAL SUPERVISION Phone 3874

WESSEX YOUTH LEAGUE

	P.	W.	D.	L.	F.	A.	Pts.
SWINDON TOWN	8	6	1	1	39	14	13
OXFORD UNITED	8	5	0	3	20	15	10
BRISTOL CITY	6	4	1	1	20	11	9
WEYMOUTH	8	3	2	2	20	24	8
PLYMOUTH ARGYLE	9	2	2	5	16	28	6
BRISTOL ROVERS	9	2	1	6	21	29	5
NEWPORT COUNTY	8	2	1	5	17	32	5

SWINDON TOWN F.C. SUPPORTERS' CLUB

THE OFFICIAL HANDBOOK FOR 1962 IS NOW ON SALE.
PRICE: ONE SHILLING. THESE MAY BE OBTAINED AT
THE SUPPORTERS' CLUB ROOM OR FROM ANY
MEMBER OF THE COMMITTEE.

Our Visitors

This evening we welcome to the County Ground the Directors, Officials and Players of Halifax Town Football Club. Like us, Halifax has not been enjoying the best of seasons. The two clubs met last season in the opening game of the season at Swindon and played a 1-1 draw. Our goal was scored by E. Hunt.

Today's team will be selected from the following players:-

David Knowles (Goalkeeper)

Local boy. Graduated from our "A" team. Height 5ft. 10in., weight 12st. 8lb.

Peter Downsborough (Goalkeeper)

Another local boy who was on our ground staff. Capped as an amateur with the West Riding County F.A. 1959-60 season. Has a great future in front of him. Height 5ft. 11in., weight 12st.

Phil Roscoe (Left Back)

Born Barnsley. Signed from home town in 1957. Graduated from Barnsley Youth XI. Height 6ft. 1in., weight 12st. 11lb.

Paddy Stanley (Right Back)

Born Dublin. Was on Leeds United ground staff from the age of 15. In 1955 signed professional for Leeds Utd., signed by us at a fee in 1958. Height 6ft. 1in. Weight 12st. 12lb.

Colin Strodder (Right Back)

Transferred from Huddersfield Town at the culmination of his contract. Played consistently well at the end of last season when he was so kindly loaned to us by Huddersfield Town. Height 5ft. 9½in., weight 11st. 11lb.

George Fagan (L.B. or L.H.)

Born Dundee. Served his apprenticeship with Leeds United from 1954 until signed by Town in 1958. Scottish Junior Representative. Height 5ft. 10in., weight 11st. 9lb.

Frank Large (Left Half)

Another local product who has made his presence felt in the Third Division and has attracted much attention. Signed professional in 1959. Ex ground staff boy. Height 6ft., weight 11st.

Alex South (Centre Half)

Born Brighton. Signed from Liverpool in 1958 season. Regular first team player. Knows the game inside out. Height 6ft., weight 11st. 9lb.

Peter Tilley (Right Half)

Born Ireland. Signed from Bury in 1958. Previous club Arsenal. Irish International. Height 6ft. 1in., weight 12st. 12lb.

Gerald Priestley (Outside Right)

Native of Queensbury, signed from Crystal Palace last season. Experienced player, spent 5 years with Grimsby. Height 5ft. 8in., weight 11st.

Eric Harrison (Right Half)

Local product. Graduated from our junior side and has been with the club since 1956. Has a great future in front of him. Height 6ft., weight 12st. 3lb.

Conway Smith (Inside Right)

Born Huddersfield. Began his professional career with his home town. Spent 5 seasons with Queens Park Rangers, being top scorer in each season. Signed by us in season 1956-57. Averaged 22 goals per season since joining us. Height 5ft. 9in., weight 11st. 12lb.

Continued on page 7

C. Dunn & Son

BUILDERS & DECORATORS

Alterations, Renovations, Conversions
Plumbers and Sanitary Engineers
503 CRICKLADE ROAD Tel. 22522

NOTTON'S CAFE

COUNTY ROAD

200 yards from Ground

RIGHT ON THE BALL

FOR PAINTS OF GOOD QUALITY
H. S. HODGES & SONS
(SWINDON) LTD.

CRICKLADE ROAD - SWINDON
PHONE 22422

Dulux, Brolac, Friary, Valspar, Wallcharm, etc.

Harold Fleming

24 REGENT CIRCUS - SWINDON

Phone 22813



FOR ALL SPORTS EQUIPMENT

Also, Scout, Guide, Cub and Brownie Wear

OUR VISITORS—continued

Mike Burgess (C.F. or W.H.)

Canadian by birth, playing experience with Bradford P.A., Leyton Orient and Bournemouth before signing for Town in the close season. Strong and forceful and a good club man. Height 6ft., weight 12st. 4lb.

Rodney Green (Centre Forward)

Another local product who has graduated from our "A" team and signed professional forms last season. Height 6ft., weight 12st. 3lb.

Graham Barnett (Inside Forward)

Transferred from Tranmere Rovers at a four figure fee in August 1961. Previous club was Port Vale for whom he did yeoman service, before going to Tranmere 18 months ago; strong forceful type of player with plenty of experience. Height 5ft. 8½in., weight 10st. 12lb.

Brian Redfearn (Outside Left)

Like Burgess he started his soccer career with Bradford P.A., was transferred to Blackburn Rovers, then to Darlington and during the season came to us on a nominal fee. Height 6ft. 0½in., weight 13st. 3lb.

GODDARD & Co.

Wholesale and Retail

WINE - SPIRIT - BEER
AND CIDER MERCHANTS

9 REGENT STREET, SWINDON

Telephone 22415

Also at

4 WINGATE PARADE, SWINDON

We are your **Main Distributors** for
VAUXHALL and **JAGUAR** cars
BEDFORD Vans and Trucks, etc.

Any make of Car or Truck
supplied - Used Vehicles a
specialised part of our
business.

SKURRAY'S
SWINDON

Telephone: 22266

H. HIBBERD LTD.

Plant Hire Contractors

TRACTORS and SCRAPERS
BULLDOZERS
DOTT SHOVELS
DIGGERS
ROAD ROLLERS

40 NEWPORT STREET, SWINDON

Telephone 6125

Swindon Bacon Curing Co. Ltd.

*Specialists in
Bacon, Pork & Cooked Ham*

50 FLEET STREET
SWINDON

Telephone: 22122

WARNES (Swindon) Ltd.

Electrical Contractors
Radio and Television

Contractors to:
SWINDON TOWN FOOTBALL CLUB

51/52 COMMERCIAL RD., SWINDON

'Phone 6346/7

160 COUNTY RD., SWINDON

'Phone 6346/7

9 SWINDON ST., HIGHWORTH

'Phone 379

7 CLIVE PARADE, SWINDON

'Phone 6346/7

DAY RETURN TICKETS

On Weekdays and Sundays (services permitting), available in each direction by any train the same day. From Swindon Junction to:-

	2nd Class
Bath Spa	7/6d.
Bristol (T.M.)	9/0d.
Weston-super-Mare	11/6d.

Other fares available. Ask for pamphlet B7/411, giving full information.

BRITISH RAILWAYS

Western Region

W. B. CARTER

Newsagent, Tobacconist and Confectioner
Large selection of Boxes of Chocolates
always in stock

CORONA, TIZER, DRINKS, etc.

Agents for Wall's Ice Cream

188/190 FERNDAL RD., SWINDON

Telephone: 3089

MILLS & MERI

SWINDON TOWN v. HALIFAX TOWN

SWINDON TOWN

RIGHT WING

Colours: RED SHIRTS,

O'Hara

Wollen (2)

Morgan (4)

Owen (5)

Summerbee (7)

Hunt (8)

Smith (9)

Referee—

Mr. H. G. New
(Havant)

**SCORES
EVERY TIME
FOOTBALL
PIN**

Redfearn (11)

Large (10)

Hopper (9)

Harrison (6)

South (5)

Roscoe (3)

Downsborough

HALIFAX TOWN

LEFT WING

These teams are subject to

16-17 BRIDGE STREET, SWINDON

**ENGLAND'S QUALITY
SERVICE**

Your Car washed in under 10 minutes

THE INSTANT

6/- ANY MAKE —

Local Station

MARLBOROUGH ROAD
SWINDON

QUEEN'S ROAD
READING

Make your goal . .

McILROYS RESTAURANT

Top of the Catering League
COFFEE - LUNCHES - TEAS
Parties catered for.
Regent Street, Swindon. Tel. 5294

THE PLESSEY COMPANY Ltd.

After years of achievement have great expansion plans for the future.

**TECHNICAL STAFF
CLERICAL STAFF
MANUAL WORKERS**

are essential for this progress.

Interested persons please apply to the Personnel Department.

ERRICKS LTD.

K TOWN Kick-off 7.30 p.m.

DON TOWN
SHIRTS, WHITE SHORTS LEFT WING

O'Hara

Trollope (3)

wen (5) Woodruff (6)

Smith (9) Atkins (10) Darcy (11)

Linesmen —

Red Flag —

Mr. R. W. Kates
(Southall)

Yellow Flag —

Mr. R. J. Edwardes
(Newport)

Hopper (9) Smith (8) Priestley (7)

South (5) Tilley (4)

Stanley (2)

Wansborough

FAX TOWN

subject to alteration

RIGHT WING

SWINDON PHONE 5365

QUALITY CAR WASHING SERVICE

in under 5 minutes by

ANT CAR WASH

E — 4 WASHES £1

all Stations:

ENS ROAD
READING

QUEENS ROAD
BRISTOL

U
P
H
O
L
S
T
E
R
S
•
R
E
M
O
V
A
L
S

INSIST ON

Garrard EQUIPMENT



For Superb Tape and Record Playing



Fitted by the World's leading manufacturers.

WILSONS (SWINDON) LTD.

BUILDERS OF
MODERN ATTRACTIVE HOUSES
AND BUNGALOWS

All enquiries to Head Office:

**90 COMMERCIAL ROAD
SWINDON 6361-3**

ONE QUALITY ONLY—THE BEST!
FRESH SUPPLIES DAILY

York Road Fisheries

SWINDON

WET, DRY or FRIED Tel.: 3680

Rent your T.V. - Washing Machines
Spin Dryers - Electrical Installations
from

D. V. HOLLAMBY LTD.

138 High St., Wootton Bassett, Wilts.
Telephone 295

ALL LEADING MAKES IN STOCK

DEMPSTER ENTERPRISES, offer a
modern fleet of 4 and 6 seater self-
drive hire cars, for your pleasure and
convenience. For advance bookings
apply:-

Dempster Enterprises

38 VICTORIA ROAD, SWINDON
Tel. 6460

Howard Autos, Swindon's Main Cotton
Motor Cycle distributors always have a
good selection of guaranteed used cars
for you to choose from.

HOWARD AUTOS

134/5 MANCHESTER ROAD
Tel. 6603

and at 3 WELLINGTON STREET, SWINDON

TICKETS

Tickets for seats in the Stand for Division III matches may
be booked in advance on application to the office, or, by
post. Postal applications should be accompanied by a remit-
tance and stamped, addressed envelope.

Please note the new prices for Stand tickets.

NEW STAND

Blocks 'A' and 'E'	4/6d.
Blocks 'B' and 'D'	5/6d.
Block 'C'	6/6d.

OLD STAND

Blocks 'F', 'G' and 'I'	4/-d.
Block 'H'	5/6d.

'BAILEY'S'

2 Cheney Manor Road - Swindon

NEWSAGENT :: TOBACCONIST
CONFECTIONER

Personal Attention and Satisfaction
always assured.

MEET YOUR FRIENDS FOR AN
ENJOYABLE EVENING AT

THE KINGSDOWN INN

(Host A. W. Vann)

FULLY LICENSED - ARKELL'S BEERS
SNACKS, Etc.

Stratton St. Margaret Tel. 3283

A. WHEELER & SON

330 CRICKLADE ROAD

PHONE 22095

FOR QUALITY COALS
AND PROMPT SERVICE

Lowest Terms for Self Drive Cars
* * *
Free Deliveries - Glasses loaned free
for your Wines, Spirits and Beers
115 CRICKLADE ROAD
"The Corner Off Licence"
Ring 4711 or call at

Have you purchased your ticket for the

HALF-TIME JACKPOT DRAW

**TICKETS 6d. EACH on sale on the Ground
FOUR PRIZES**

★ ★ ★

Result of Draw on Monday, 9th April, 1962

1st Prize £31-4-0. Ticket No. 12693

2nd Prize £23-8-0. Ticket No. 9074

3rd Prize £15-12-0. Ticket No. 6517

4th Prize £7-16-0. Ticket No. 15120

★ ★ ★

**TODAY'S WINNING NUMBERS WILL BE ANNOUNCED AT
HALF-TIME.**

The following will assist you to record the numbers and prizes as announced.

1st PRIZE	No.....	Amount £.....
2nd PRIZE	No.....	Amount £.....
3rd PRIZE	No.....	Amount £.....
4th PRIZE	No.....	Amount £.....

Winning numbers will also be published in "Evening Advertiser"

FIXTURES AND RESULTS TO DATE

DIVISION III

1961

Aug. 19	Portsmouth	H	1-3
21	Coventry City	A	1-2
26	Crystal Palace	A	1-3
29	Coventry City	H	3-3
Sept. 2	Bournemouth	H	1-1
4	Queen's Park R.	A	1-6
9	Watford	A	0-2
16	Hull City	H	1-1
19	Barnsley	H	1-1
23	Northampton T.	A	2-1
27	Barnsley	A	2-6
30	Lincoln City	H	4-0
Oct. 3	Grimsby Town	H	0-0
7	Brentford	A	0-1
10	Grimsby Town	A	1-0
13	Reading	H	4-1
17	Queen's Park R.	H	0-0
21	Bristol City	A	3-5
28	Bradford	H	3-2
Nov. 4	(1) Kettering T.	H	2-2
8	Kettering T.	A	0-3
11	Shrewsbury Tn.	H	1-2
18	Peterborough U.	A	2-3
25	(2)		
Dec. 2	Newport County	A	2-2
9	Southend U.	H	0-0
16	Portsmouth	A	2-2
23	Crystal Palace	H	5-0
26	Halifax Town	A	P

1962

Jan. 6	(3) Notts County	A	P
13	Bournemouth	A	0-0
20	Watford	H	3-1
27	(4) Port Vale	H	P
Feb. 3	Hull City	A	1-0
10	Northampton T.	H	2-2
17	(5) Lincoln City	A	2-2
23	Brentford	H	5-2
Mar. 2	Reading	A	1-1
10	(6) Bristol City	H	0-4
17	Bradford	A	2-2
19	Halifax Tn.	A	0-2
23	Notts County	H	1-0
31	(S.F.) Shrewsbury	A	3-1
Apr. 7	Peterborough U.	H	3-2
12	Notts C.	A	
14	Port Vale	A	
16	Halifax Tn.	H	
20	Torquay Utd.	H	
21	Newport County	H	
23	Torquay Utd.	A	
28	Southend Utd.	A	
30	Port Vale	H	

May 5 (Final)

FOOTBALL COMBINATION

1961

Aug. 22	Leyton Orient	H	0-0
Sept. 6	Southend Utd.	A	1-3
13	Portsmouth	A	1-7
20	Bournemouth	A	0-3
26	Birmingham	H	1-1
Oct. 4	Aldershot	A	1-2
10	Watford	H	1-3
Nov. 1	Millwall	A	0-1
7	Fulham	H	1-4
14	Southampton	H	2-0
22	Coventry City	A	2-1
29	Reading	A	1-3
Dec. 5	Brighton	H	4-2
12	Brentford	A	3-1
19	Charlton	H	P

1962

Jan. 3	Chelsea	A	P
9	Chelsea	H	0-0
17	Leyton Orient	A	1-2
23	Portsmouth	H	2-0
31	Birmingham City	A	1-1
Feb. 6	Bournemouth	H	3-2
13	Watford	A	1-3
20	Aldershot	H	5-0
26	Queen's Park R.	A	P
Mar. 6	Millwall	H	3-1
14	Fulham	A	1-1
20	Southend Utd.	H	3-1
28	Southampton	A	0-0
Apr. 2	Chelsea	H	4-0
3	Coventry City	H	1-2
10	Reading	H	2-0
17	Brighton	A	
23	Brentford	H	
26	Q.P.R.	H	
28	Charlton	H	
May 2	Charlton	A	

The Rendezvous of all Sportsmen . . .

THE CROWN INN

(Host: Frank Plyer)

Arkell's Best Ales : Fully Licensed
Snacks, etc.

STRATTON ST. MARGARET Tel. 2339

SUPPORT YOUR HOME

CIVIL DEFENCE

Plays a vital part in saving lives

Particulars:

CIVIC OFFICES - SWINDON

WIN OR LOSE !

THE FOOD IN THE

China Restaurant

IS BEST

* * *

107 COMMERCIAL ROAD

SWINDON 6888

Open Daily 12 noon - 11.30 p.m.

For all Chinese and English Dishes

**SPECTATORS ARE REQUESTED
NOT TO CROSS THE PLAYING
PITCH AT THE END OF
THE GAME**

COATE GARAGE



THE ALCOHOL FUEL

REPAIRS
SERVICING
TYRES

★

OVERHAULS
REBORING
WELDING

Props.: E. V. & W. H. Mattick

MARLBOROUGH ROAD, SWINDON

For something a little different, try

DON JONES

HIGH CLASS CONFECTIONER
AND TOBACCONIST

Always a good selection of
SUCHARDS' - TOBLER
TERRY'S

Quality Chocolates and Presentation
Boxes

112 COMMERCIAL ROAD

6012

SWINDON

6012

Typewriters from £10

FULLY GUARANTEED

DOBELL SHEARMAN

& CO. LTD.

26 HIGH ST. & 33 FARINGDON RD.,
SWINDON Telephone 4961

Only 800 yards to your Dream Car—

NEW ALPHA MOTOR Co.
(SWINDON) LTD.

QUEENS DRIVE, SWINDON

Tel. 5062/63

FOR TOP QUALITY USED CARS

Open 7 days per week from 7 a.m. to 10.30 p.m.
Servicing for all makes of cars

FOOTBALL COMBINATION Mid-Week Section

	P.	W.	D.	L.	F.	A.	Pts.
Birmingham City	30	17	6	7	51	28	40
Leyton Orient	28	18	3	7	56	31	39
Millwall	29	14	7	8	78	54	35
Portsmouth	27	15	4	8	53	38	34
Bournemouth	29	14	6	9	57	41	34
Chelsea	30	15	4	11	73	54	34
Watford	29	15	3	11	65	49	33
Reading	31	14	5	12	57	49	33
Southend Utd.	30	14	2	14	52	59	30
Southampton	27	12	4	11	55	45	28
Swindon Tn.	28	11	6	11	45	44	28
Coventry City	29	11	4	14	55	57	26
Aldershot Town	28	9	7	12	41	55	25
Fulham	28	10	5	13	45	61	25
Charlton A.	29	9	4	16	38	56	22
Brighton	28	5	7	16	33	63	17
Queen's Park R.	25	6	4	15	31	64	16
Brentford	29	4	7	18	28	65	15

Chappell's Funeral Service

(Fun. Dir.: A. A. Winchcombe)

196 COUNTY ROAD
SWINDON

24 hour Service Tel. 6073

Your local "TEAM" for RENAULT
Sales and Service

CORONATION CAR SALES

67/68 VICTORIA ROAD

Telephone 4964

**SEA VIEW HOLIDAY
CAMP**

YOUR HOST — Mr. BENNETT

★ ★ ★

WYKE REGIS - WEYMOUTH
Dorset

"COAL!"
"COAL!"
"COAL!"

J. WILMER

ST. MARGARET'S ROAD, SWINDON

Telephone 22535

MEET YOUR FRIENDS AT THE

Southbrook Inn

(Hosts: Mr. and Mrs. Jack Scutts)

FULLY LICENSED
CLINCH BEERS, ETC.

SOUTHBROOK STREET, SWINDON
Tel.: 5837

STOP!

LOOK!

NU-HOMES

For all Household Fitments

Paints - Emulsions - Wallpapers
Kitchen Units and Bathroom Suites,
etc.

176a Manchester Road
TELEPHONE 22178

FORTHCOMING MATCH . . .

DIVISION III

SWINDON TN. v. NEWPORT C.

SATURDAY NEXT, APRIL 21st, 1962

Kick-off 3 p.m.

**BRITANNIA
MOTORS**

Proprietor: A. GODWIN

205-206 RODBOURNE ROAD
SWINDON PHONE 5303

- **TYRES**
NEW AND REMOULD
CASH OR EASY PAYMENTS
- **ACCESSORIES**
- **QUICK SERVICE AND REPAIRS**
AT SWINDON'S MOST MODERN
LUBRICATION BAY AND
WORKSHOP

*For High Class
Central Heating, Plumbing
Painting and Decorating
Electrical Installations
and Repairs*

•

NORTH WILTS

Sanitary & Heating
Co. Ltd.

NEWPORT ST., SWINDON

'Phone: 5373/4

Always at your service

L. BIBBY

For all Types, Rags, Iron and Metal,
etc. Spot Cash Paid. Please Telephone
2101 and our van will call.

THE PADDOCK, ERMIN STREET
STRATTON ST. MARGARET

Walcot Greengrocer

G. E. STAMMERS

☞

**1 SUSSEX SQUARE
SWINDON**

SWINDON

22526

*CAN ALSO BE YOUR LUCKY NUMBER ! ! !
if you ring*

HOLMES & LUCAS

14A REGENT STREET :: SWINDON

for all your

TELEVISION, RADIO AND ELECTRICAL REQUIREMENTS

LUCKY PROGRAMME

Please retain your programme. An announcement will be made at half-time of two numbers and the holders will be given a stand seat at the next Division III game. The persons who purchased the programmes bearing the winning numbers should call at the office after the game and claim their seats.

2

FRIED FISH AND CHIPS

Always Fresh - Always Hot

WALCOT FISHERIES
Sussex Square

Wet fish and frozen foods all refrigerated display.

HATTON'S NEWSAGENCY
A. J. D. WOODHOUSE & A. SMITH
Newsagents & Tobacconists & Confectioners
Agents for Wessex School of Motoring
Main Booking Agents for Millers Coaches
6 REGENT CIRCUS (NEAR G.P.O.)
Telephone Swindon 22731

For Insurance or Hire Purchase
CARS - CARAVANS - MOTOR CYCLES, etc.
Consult

D. & H. HENTY LTD.
54 COMMERCIAL RD., SWINDON
SWINDON 5258

PANKHURST
The Palace, Gorse Hill,
Swindon

MOTOR CYCLE - SCOOTER AND
THREE-WHEELER SPECIALISTS

Open Mon. to Sat. 9 a.m. - 8 p.m. Phone 5466

MORGAN'S IRONMONGERS
C.A.S.M.S. (Swindon) Ltd.

2 SUSSEX SQUARE, WALCOT, SWINDON
also at 163 RODBOURNE ROAD Tel. 22516
Paraffin services to all areas town and country
Everything for the home
Precision Tools for Engineering Trade,
Tools for all trades

Maylott Studios

For GROUP & SPORT Photographs
OFFICIAL PHOTOGRAPHER TO
SWINDON TOWN FOOTBALL CLUB
31 FARINGDON RD. Tel. 22792